

Service Manual

Motor suction handpiece

Motor suction handpiece with hose and contact plate for foot care devices SATURN AT MICRO, LUNA AT MICRO, TRITON AT MICRO and JUPITER Duomatic.



Contents

1 General	3
1.1 Purpose	3
1.2 Qualification of personnel	3
1.3 Contact	3
2 Product Versions	4
3 Maintenance and repairs	5
3.1 Replace motor cable	5
4 Troubleshooting	6
5 Test plan	7
6 Spare parts	8
6.1 Motor suction handpiece SATURN, LUNA, TRITON	8
6.2 Motor suction handpiece JUPITER	9
6.3 Handpiece	10

1 General

1.1 Purpose

This service manual is intended to help authorized workshops to service and repair the following motor suction handpiece assemblies:

- 705210200 Motor suction handpiece, SATURN
- 705210300 Motor suction handpiece, LUNA
- 704260000 Motor suction handpiece, TRITON
- 704207507 Motor suction handpiece, JUPITER Duomatic

The handpiece attachment and the respective foot care devices are not described in this document. These items are described in separate service manuals.



Note: Also read the user manual of the respective foot care device. It contains important information on the operation and maintenance.

1.2 Qualification of personnel

Service work on motor handpieces may only be carried out by qualified and authorized specialists. Qualified specialist personnel are persons who, due to their specialist training, knowledge and experience, as well as their knowledge of the relevant safety regulations, are able to carry out the work safely and to recognize and avoid possible dangers. Advanced technical knowledge and basic knowledge of occupational safety are required. The local accident prevention regulations and the general safety regulations apply. The relevant safety regulations of DIN, EN, and VDE must be observed.

1.3 Contact

The technical service of Eduard Gerlach GmbH will be happy to assist you, if you have any further questions.

Eduard Gerlach GmbH

Bäckerstraße 4 – 8
D-32312 Lübbecke
Germany

Telefon: 0049 5741 / 330-0

Technical Service International: technical-service@gehwol.de

Copyright © 2020 Eduard Gerlach GmbH

Unless otherwise stated, all texts, images and other published information are subject to the copyright of Eduard Gerlach GmbH or are published with the permission of the rights holder. Any duplication, distribution, distribution of content is expressly prohibited without the written consent of Eduard Gerlach GmbH.

Revision: E01

2 Product Versions

The motor suction handpiece comes in slightly different versions for SATURN, LUNA, TRITON and JUPITER Duomatic foot care devices. The motor handpiece can be removed from the main unit.

Type	Motor handpiece SATURN AT MICRO	Motor handpiece LUNA AT MICRO	Motor handpiece TRITON AT MICRO
Order-No.	705 210 200	705 210 300	704 260 000
Serial number	11-xxxx	21-xxxx	51-xxxx
Max. speed	42.000 min ⁻¹	30.000 min ⁻¹	30.000 min ⁻¹
Elbow swivel range	45° left and right	45° left and right	0 to 90° left
Connects to	Dust bag compartment	Dust bag compartment	Dust bag compartment



Type SATURN / LUNA / TRITON



Type JUPITER Duomatic

Type	Motor suction handpiece JUPITER Duomatic S2
Order-No.	704 207 507
Serial number	31-xxxx
Max. speed	42.000 min ⁻¹
Connects to	Jupiter connection panel

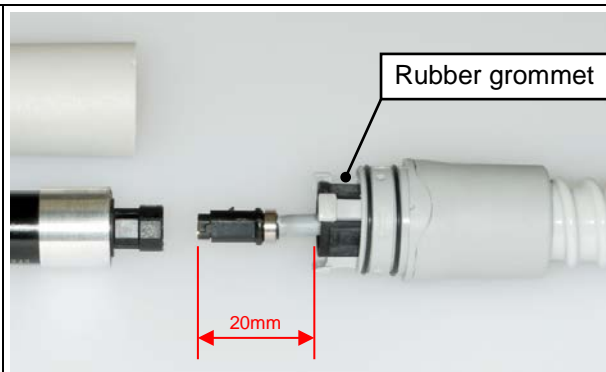
3 Maintenance and repairs

3.1 Replace motor cable

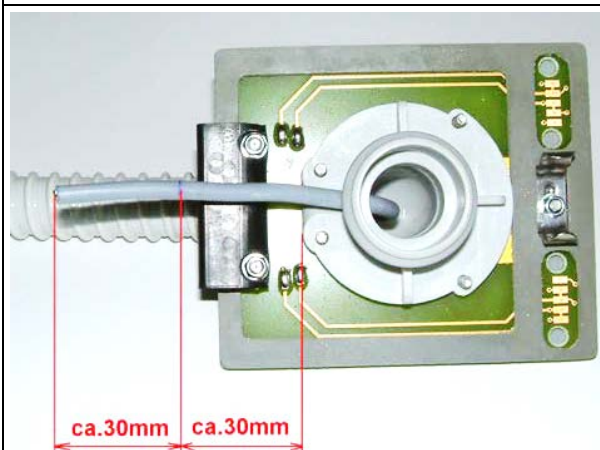
The motor cable inside the suction hose can be replaced.



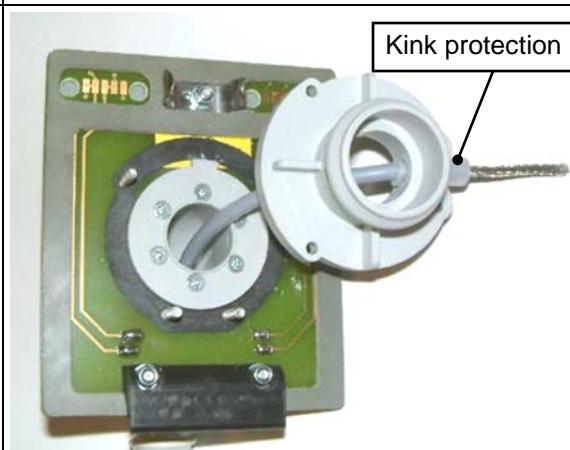
704207293 Motor cable EC 16



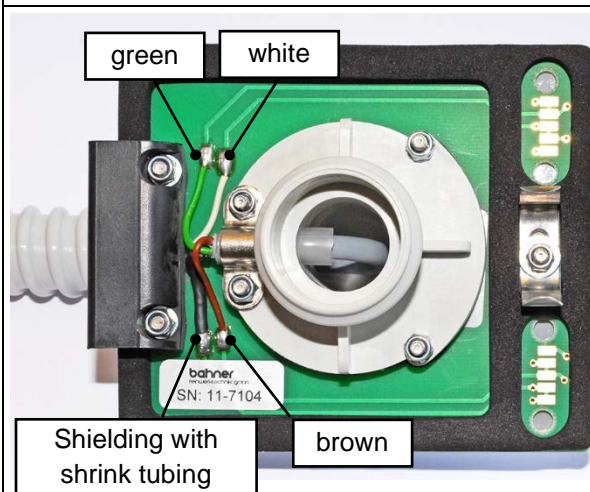
Thread the new cable through the rubber grommet into the hose. Let it protrude about 20 mm.



Unscrew the flange. Guide the cable through the flange and cut it as shown.

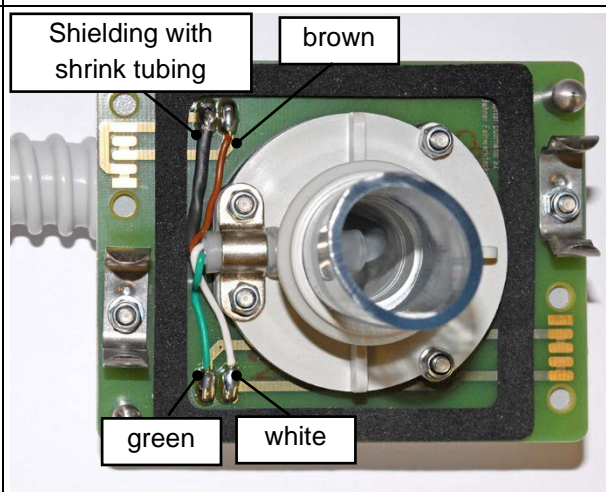


Attach the silicone kink protection sleeve and strip the cable approx. 30 mm.



SATURN / LUNA / TRITON:

Strip the wires and put a heat-shrink tubing on the shielding wire. Solder the wires as shown. Install the cable clamp and screw on the flange.



JUPITER Duomatic:

Strip the wires and put a heat-shrink tubing on the shielding wire. Solder the wires as shown. Install the cable clamp and screw on the flange.

4 Troubleshooting

Error	Cause	Action
Handpiece motor is not running	Motor defective	Replace motor
	Motor connector piece broken	Replace motor
	Bad contact	Check motor connector
	Cable break	Replace motor cable
Handpiece motor does not run properly. Has to be cranked up	A phase is missing due to bad contact to hose contact plate	Check connection and alignment of hose contact plate and that spring contacts do not get jammed.
	A phase is missing due to a cable break in the motor cable	Replace motor cable
	Handpiece motor defective	Replace motor
Handpiece motor has drop outs	A phase is missing due to bad contact to hose contact plate	Check connection and alignment of hose contact plate and that spring contacts do not get jammed.
	A phase is missing due to a cable break in the motor cable	Replace motor cable
	Handpiece motor defective	Replace motor

5 Test plan

This test plan is intended for single motor handpiece assemblies. When servicing complete foot care devices, please use the test plan for the respective device.

Motor suction handpiece	
S/N of foot care device:	
S/N of motor suction handpiece (label on flange)	
S/N and type of handpiece motor:	
Customer:	

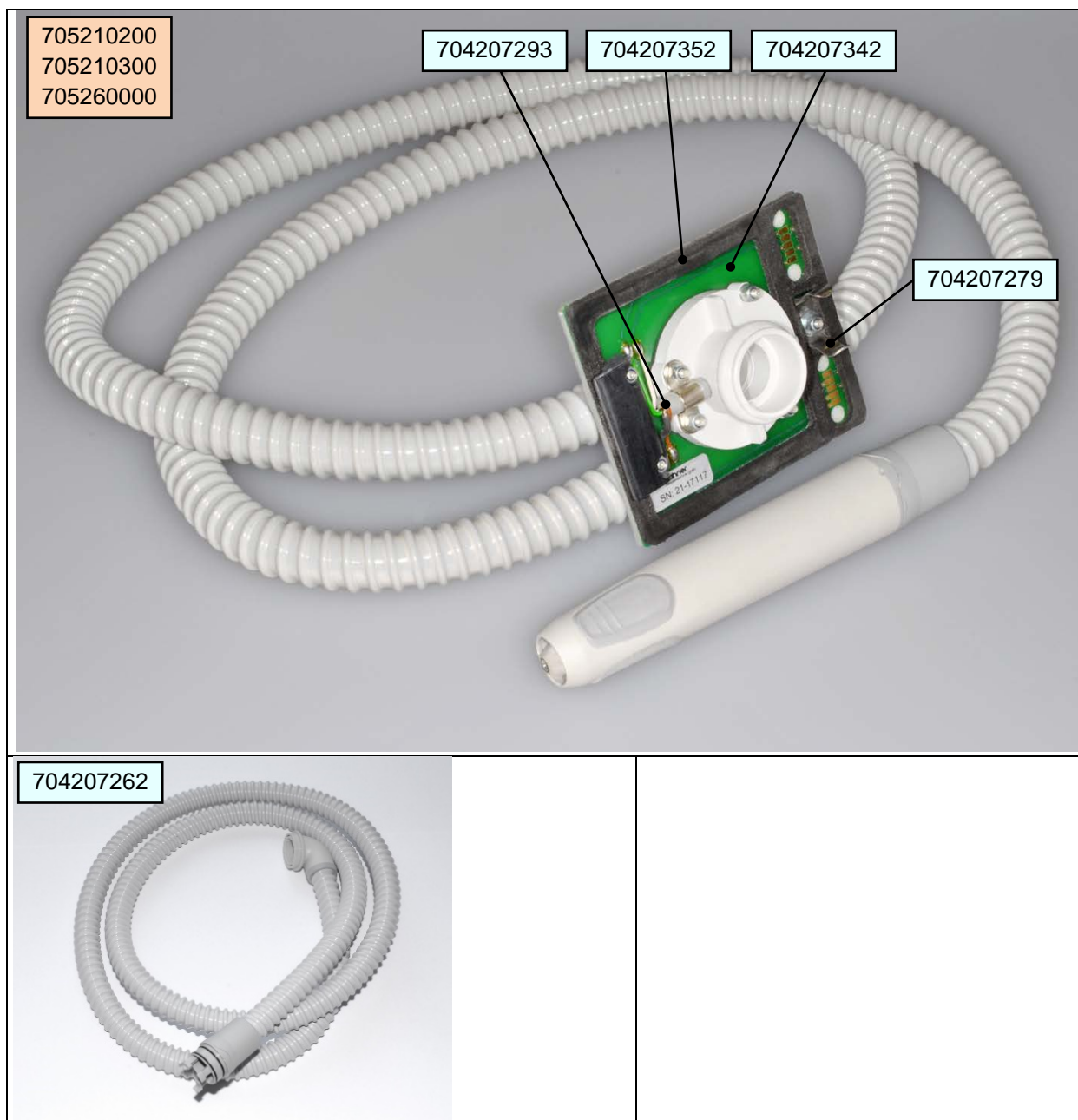
Component	Test case / action	Tested / done
Suction hose	The suction hose is undamaged, tight, clean and dust-free. Check for leaks and background noises. The swivel elbow is easy to turn.	
Motor cable	The motor cable is undamaged and clean. The connector is firmly attached to the motor and the latch is undamaged.	
Contact plate	The contacts are undamaged and clean. The seal is undamaged. The plate is easy to insert into the device and keeps tight.	

Testing workshop (company stamp):	Date:
	Sign:

Notes:

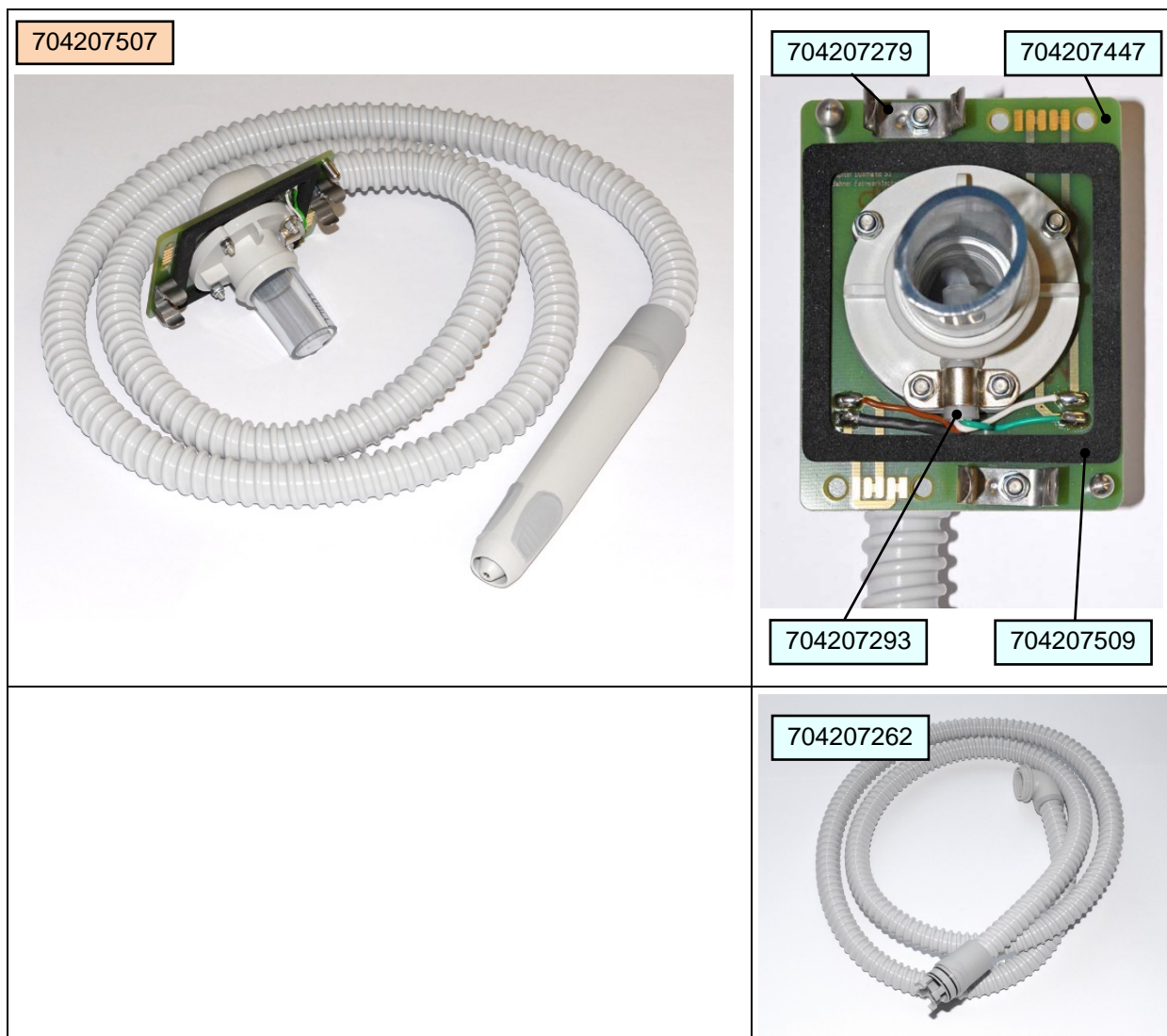
6 Spare parts

6.1 Motor suction handpiece SATURN, LUNA, TRITON



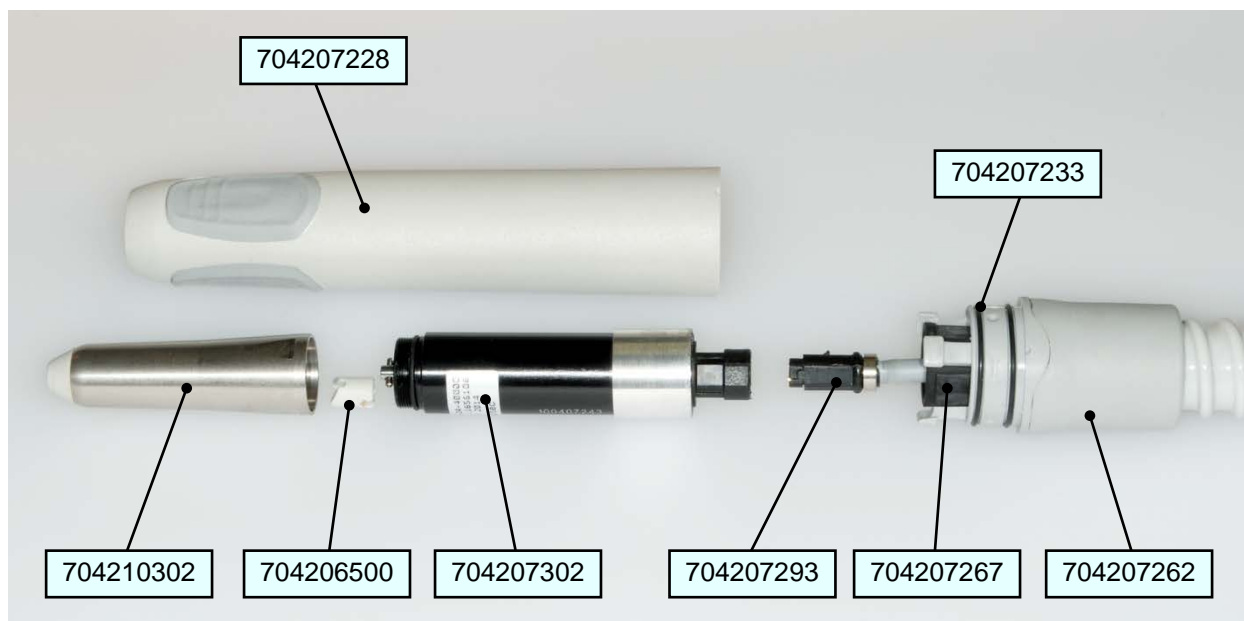
Order-No.	Item	Note
705210200	Motor suction handpiece, Saturn	
705210300	Motor suction handpiece, Luna	
705260000	Motor suction handpiece, Triton	
704207262	Suction hose	without cable
704207293	Motor cable, EC 16	
704207352	Gasket for contact plate Uni V2006	
704207342	Contact plate Uni V2006	Plate without gasket and attachment parts
704207279	Spring clip	

6.2 Motor suction handpiece JUPITER



Order-No.	Item	Note
704207507	Motor suction handpiece, JUPITER	
704207262	Suction hose	without cable
704207293	Motor cable EC 16	
704207509	Gasket for contact plate, JUPITER	
704207447	Contact plate, HSD AT, JUPITER S2	Plate without attachment parts
704207279	Spring clip	

6.3 Handpiece



Order-No.	Item	Note
704207228	Handpiece outer cover	
704210302	Handpiece FH40A, packed*	Handpiece attachment, packed, with booklet.
704206500	Coupling	
704207302	Motor FH40A Novo	
704207293	Motor cable EC 16	
704207267	Rubber grommet	
704207262	Suction hose	Without cable
704207233	O-ring 20 x 1 mm	

*The handpiece attachment is described in detail in a separate service manual.